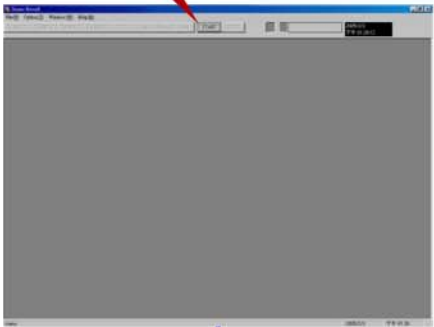


# Load Data Operating Steps

← RS232 Operation Process      Meter Down Load Process of Data Logger →

Push "START" button, PC & meter online.



**ON**      **OFF**

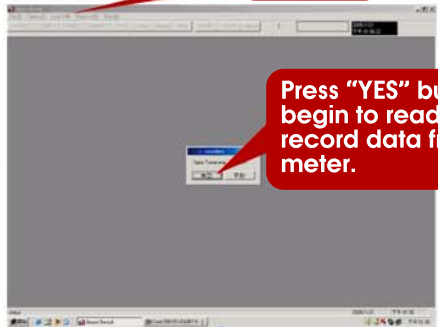
(show pc symbol)

(do not show pc symbol)



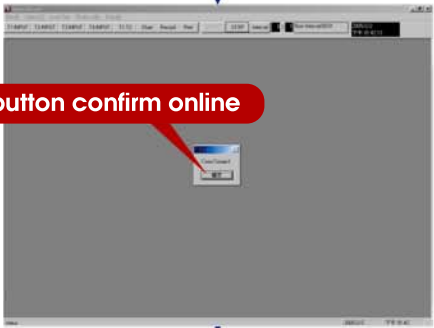
Press "RS232" button

**LOAD ON**



Press "YES" button to begin to read the record data from the meter.

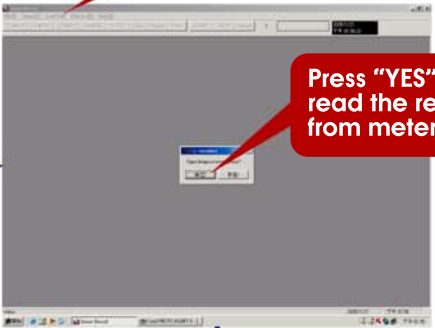
Press "YES" button confirm online



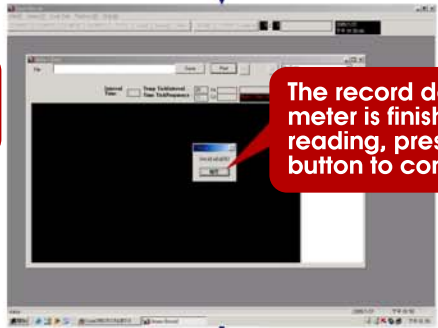
**ERROR**

**LOAD ON**

Press "YES" begins to read the record data from meter.

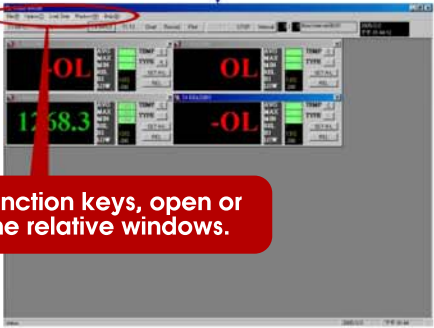


The record data of meter is finished reading, press "YES" button to confirm.

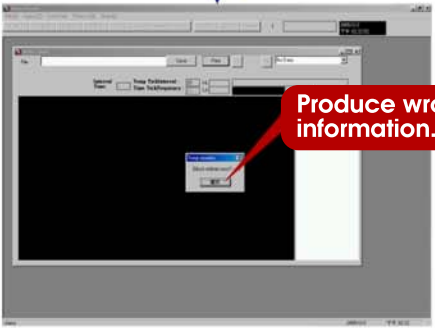


Select record files.

Click function keys, open or close the relative windows.



Produce wrong information.



Choose T1 - T4, or all draw the curve of record data.

The record data of the record files.

